

# ***PUBLIC AUCTION***

***Owners Retiring – Everything Must be Sold!***

## ***Williams Machine & Welding***

2625 5th Ave. S.,  
Birmingham, Alabama 35233

**Slotter & Keyseater,  
Lathes, Boring Mills,  
VTLs & Mills**

***Thursday, June 29  
at 10:30 A.M. CDT***

Inspection: Wednesday,  
June 28, 9:00 A.M.–4:00 P.M.

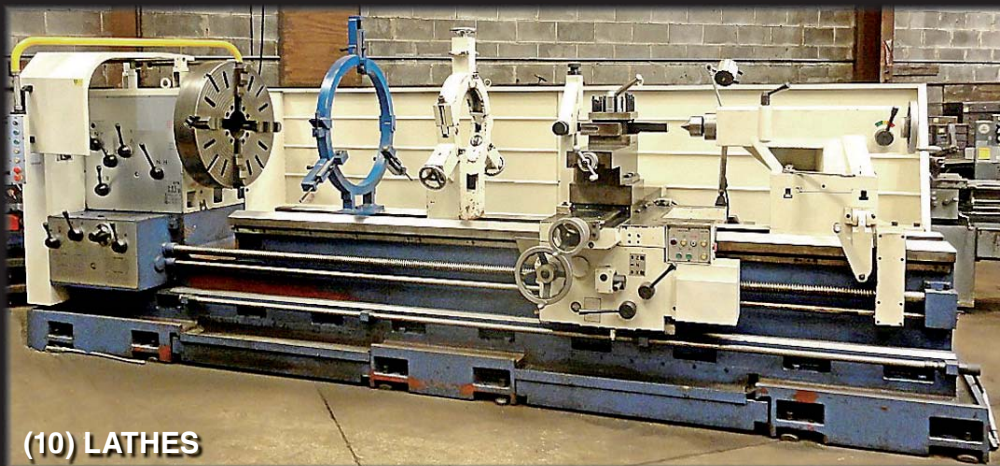
**(3) BORING MILLS**



**(4) MILLS**



**(10) LATHES**



**3 Bridge Cranes  
Over 20 Welders**

Real Estate for Sale by Owners: 38,000± Sq. Ft. on .87 Acres

***See it at: [www.stoneauctioneers.com](http://www.stoneauctioneers.com)***



**STONE**  
AUCTIONEERS & APPRAISERS

61 Lakeview Lane, Carrollton, AL 35447 / Ph: 205 373 1130

Mike Stone, CAI, AARE, GPPA, Broker / Auctioneer / Jamison Stone, Project Manager / 12% Buyer's Premium Applies Onsite  
Licenced in AL 1446, GA 002910, TN 5856-Frm 4960, KY 2714, MO 75022, FL 050568488, IL 1274, TX 13964, MS 750-Frm 1070F, NC 8694

***“Rock Solid Accelerated Marketing Strategies”***



# FEATURED ITEMS

6" HOLLOW SPINDLE

2012

63" SWING AT GAP X 120" CENTERS

**SUMMIT Gap Bed Lathe**, Mdl. MX42-6 x 120, 42" swing x 120" centers, 63" swing over gap, 6" spindle bore, 9–600 RPM, taper attachment, 32" 4-jaw chuck, tailstock, (2) steady rests, follow rest, power feed, rapid travel, auto oiling, 30 HP, metric and american threading, geared head, SN 11072, 2012 – well tooled.

4-1/8" SPINDLE BORE

39" SWING AT GAP X 240" CENTERS

**SUMMIT Mdl. MX26-4 x 240 Gap Bed Lathe**, 26" swing x 240" centers, 39" swing over gap, 4-1/8" spindle bore, 14–1,010 RPM, rapid traverse, taper attachment, tail stock, (3) steady rests, follow rest, 24" 4-jaw chuck, 20" 3-jaw chuck, metric and american threading, power feed, SN 790510, 1979 – well tooled.

**BULLARD Cutmaster Vertical Turning Lathe**, Mdl. 75, 2-head, 66" 4-jaw chuck, 72" swing, 32" ram head travel, 3.4–125 RPM, 54" max. under rail, 60 HP, pendant control, SN 30519, w/tooling.

82" SWING AT GAP X 312" CENTERS

**BOEHRINGER VDF Mdl. E13/E15 Gap Bed Lathe**, 65" swing x 312" centers, 82" swing over gap, 3-1/8" spindle bore, taper attachment, 60" 4-jaw chuck, (3) ball bearing steady rests, rapid traverse, grinding attachments, PLUS: (3) pallets of tooling, metric and american threading w/change gears, SN N475.

**BULLARD Vertical Turret Lathe**, w/side head, 5-position turret, 50" 4-jaw chuck, 54" swing, 35.5" under rail, 29.5" under side head, 3.5–60 RPM, 30 HP, spindle drive, SN 19718.

RETRO FITTED  
VARIABLE SPEED  
FEED CONTROL

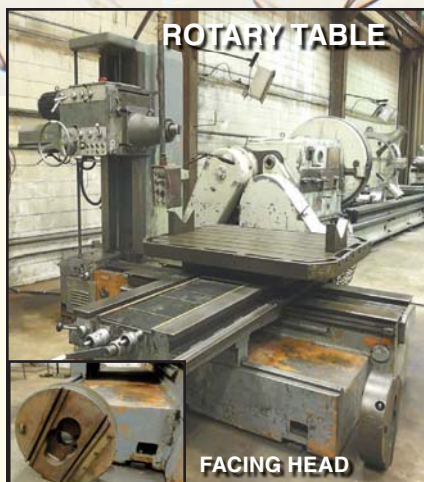
POWER DRAW BAR

**GIDDINGS & LEWIS Horizontal Boring Mill**, Mdl. 70A-E4-T, 4" spindle, 36" x 72" table, 15,000-lb. cap., 60" @ X, 48" spindle to table, 36" in-and-out, 30" spindle travel, 50 taper tooling, power draw bar, pendant control, SN 400-2039, w/ Control Services DC variable speed feed control, retrofitted in 2006, w/tooling.

72" SWING

54" SWING





**ROTARY TABLE**

**FACING HEAD**

<

**SUPERMILL Horizontal Boring Mill**, Mdl. AL 76/B4, 3" spindle, #5 Morse taper, 48" x 60" rotary table, 3,300-lb. cap., 74" @ X, w/spindle support, 40" spindle to table, 3.37" in-and-out, 26" spindle travel, 10-1,800 RPM, 9 HP, 18" facing head, SN 3062.2, w/tooling.

>

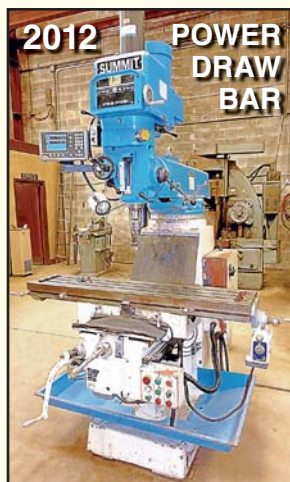
**UNIVERSAL Horizontal Boring Mill**, #30 tri-way, 3" spindle, #5 Morse taper, 32" x 58" table, 39" in-and-out, 40" spindle travel, 16-650 RPM, tail stock, 33" spindle to table, w/tooling.



**4-1/8" SPINDLE BORE**

**GAP BED**

**SUMMIT Gap Bed Lathe**, Mdl. 19-4X-80, 19" swing x 80" centers, 27" swing over gap, 4-1/8" spindle bore, 22-1,500 RPM, taper attachment, 16" 4-jaw chuck, 12" 3-jaw chuck, follow rest, tail stock, face plate, 7.5 HP, metric and american threading, SN 4313, 1979 - well tooled.



**2012**

**POWER DRAW BAR**

<

**SUMMIT Vertical Mill**, Mdl. VS-550B, VS, PF @ X and Y, power knee travel, power draw bar, 70-3,800 RPM, 11" x 52" table, 5 HP, 3-axis Innova DRO, SN 7921, 2012.



**BRIDGEPORT Series II Vertical Mill**, PF@X, VS, w/Acu-Rite 2-axis DRO, chrome hard ways, 11" x 58" table, 2 HP, SN 82985.



**LEBLOND Regal Lathe**, 15" swing x 78" centers, 1-1/2" spindle bore, 30-1,200 RPM, 12" 4-jaw chuck, taper attachment, steady rest, tail stock, SN 4C577, 1968 - well tooled.



**LEBLOND Regal Lathe**, 15" swing x 54" centers, 1-1/2" spindle bore, 30-1,200 RPM, 12" 4-jaw chuck, 10" 3-jaw chuck, tail stock, taper attachment, steady rest, 5 HP, SN 8C3890, 1974 - well tooled.



**BRIDGEPORT Series II Vertical Mill**, PF@X, VS, w/Auc-Rite 2-axis DRO, chrome hard ways, 11" x 58" table, 2 HP, SN 75845.



**AMERICAN Pacemaker Lathe**, 22" swing x 168" centers, 2.25" spindle bore, 21" 4-jaw chuck, 12" 3-jaw chuck, tail stock, taper attachment, w/steady rest (not attached), 23" face plate, SN 62384-41 - well tooled.



**SYDNEY Lathe**, 26.5" swing x 102" centers, 2" spindle bore, 18" 4-jaw chuck, 12" 3-jaw chuck, taper attachment, (2) steady rests, tail stock, 20" face plate, SN 200 8067 - well tooled.





**ROCKFORD Hydraulic Slotter**, Mdl. SL, Series #3, 20" rating, 36" max. stroke, 6" min. stroke, 83" slots to center, 40" max. dist. under adj. ram guide, 0–10 deg. ram angle adj., 0–80"/min. cutting speed, 10,800-lb. max. cut pressure, 16" vertical adj. ram guide, 36" cross travel, 42" longitudinal travel, 0–140" range of cross feed and long. travel, 0–108" circular feed to table (on 12" circle), 42" rotary table dia., 20 HP, NEW Flow Dynamics and Automation 25 HP hydraulic unit – installed 2016 (for \$30,000).



**OHIO Horizontal Mill**, #50 taper tooling, rapid travel, w/(2) heads (one Bridgeport type vertical head), 16.5' x 6' table w/tooling.

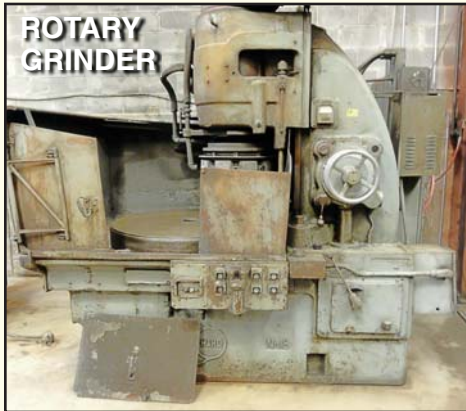


< **Heavy-Duty H-Frame Hydraulic Press**, 55-ton cap., new hydraulic unit.

> **Portable Horizontal Boring Mill**, w/(10) #3 taper boring bars.



**MORRISON Keyseater**, Mdl. K, 1-1/4" cap., SN K702323 w/(3) cutter bars and tooling.



**BLANCHARD #18-42 Rotary Surface Grinder**, 42" mag chuck, 40" swing, 12" under wheel, 35 HP, SN 8968.



**Horizontal Bulldozer Press**, 100-ton cap., 6.5' vertical arm travels, 72" horizontal arm travel, 3" ram, w/adjustable head, w/OTC Series SS electric hydraulic pump.



**MARVEL Mitering Vertical Band Saw**, Series 8 MKII, 24.25" x 33" T-Slot work table, 1" blade, 18" throat, 18" x 22" cap. @ 90 deg., 18" x 12.75" cap. @ 45 deg., 18" wheel, 50–450 FPM, 0–140-lb. feed pressure, SN 830355, w/18" x 8' in-and-out feed roller table, 2007.



**CLAUSING Colchester Geared-Head Lathe**, Mdl. 6535, 15" swing x 48" centers, 2" spindle bore, 8" 3-jaw chuck, SN 311436.



**IKEDA Radial Arm Drill**, Mdl. RM-1300, 4.5' arm, 13" column, 30–1,440 RPM, #5 Morse taper, quick disconnect tooling, 27" x 17" box table, 5 HP, SN 77067.



## (3) BRIDGE CRANES - 10, 5 & 2-TON



**SPACEMASTER Bridge Crane**, Mdl. SX, 10-ton cap., single girder, top running bridge, 10-ton under hung hoist, 45' bay.

Also Selling: 250' crane ways and bus.





**LINCOLN Commander 300 Diesel Welder/Generator**, Mdl. K1525-2, SN U1990109215, 1,432 hrs.



**LINCOLN Ranger 250 Welder/Generator**, SN U1070201981, 588.5 hrs.



**FORD F-350 XL Dually Truck**, V8, 5-speed, 9' x 7' work body, 68,289 miles, VIN 3FEKF37H8VMA06273, 1997.



Partial Views of Welders, Over 20 Welders to Be Sold.



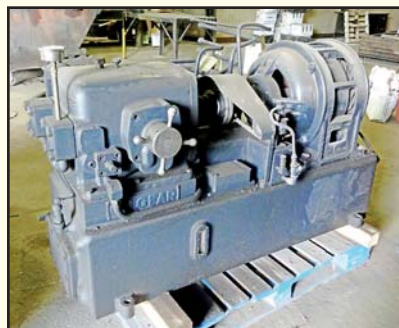
**BORTECH Auto Bore BW3000 Welder**, Mdl. 160 M, 175 A max. weld current, .023-.45 wire diameter, 60" unsupported reach, 6" stroke, SN 102293160M, 2014.



**CHEVROLET Step-Side Truck**, 1/2-ton, automatic, regular cab, 149,770 miles, VIN 1GCEC14T237109213, 2003.

**QUINCY Reciprocating Air Compressor**, Mdl. 350, 2-stage, 10 HP, SN 612 9011.

**AES Air Dryer**, Mdl. DHT-50, 50 SCFM, 200 max. PSI, 100 deg., SN HICES12219.



20 HP Hydraulic Unit.



**HYSTER 120 Forklift**, Mdl. S120XL25, 6,500-lb. cap., 3-stage mast, LP gas, SN D004D104384.



Partial View of QC - Large Mics.



Partial View of Metal Tubing Stock.

See it all at [www.stoneauctioneers.com](http://www.stoneauctioneers.com)

Directions, Auction Terms & Conditions Available at [www.stoneauctioneers.com](http://www.stoneauctioneers.com)

**Public Auction - Live Onsite** BidSpotter.com **Live Online**



# PUBLIC AUCTION



**STONE**  
AUCTIONEERS & APPRAISERS

61 Lakeview Lane, Carrollton, AL 35447

**Short Notice**

Presorted  
First Class Mail  
U.S. Postage  
PAID  
Eugene, Oregon  
Permit No. 17

**Williams Machine  
& Welding** Birmingham, Alabama

**Thursday, June 29  
at 10:30 A.M. CDT**

CAGA  
CERTIFIED  
APPRAISERS

GPPA  
Graduate Personal Property Appraiser

CAI  
AUCTIONEER

Accredited Auctioneer Real Estate

**Many Items Not Pictured – See it all at: [www.stoneauctioneers.com](http://www.stoneauctioneers.com)**



Partial View of Machine Tooling, Perishable Tooling, Hand Tools and QC Equipment

## NOT PICTURED

### SAWS

MARVEL Mitering Vertical Band Saw, Series 8 MK1, 33" x 25.5" T-slot work table, 1" blade, 18" throat, 18" x 20" cap. @ 90 deg., 18" x 12.25" cap. @ 45 deg., 18" wheel, 50–450 FPM, 0–140-lb. feed pressure, SN 820754, w/18" x 8' in-feed roller table, 1980.

### WELDING

MILLER SPH666 Welder.  
MILLER Deltaweld 450 Wire Welder.  
MILLER Welder, SN HD67670-1.  
(2) MILLER Thunderbolt XL225/150 Welders.  
LINCOLN Idealarc R35-325 Wire Welder.  
MILLER SRH55 Welder, SN HF865793.  
Aluminum Spool Gun.  
MILLER Dialarc 250-AC/DC Wire Welder.  
LINCOLN AC225 Welder.  
LINCOLN 300 Welder.

LINCOLN Idealarc Tig 300/300/AC/DC Welder, SN 648754.

MILLER Deltaweld 452 Wire Welder, SN KA059457.

MILLER XMT 350 CC/CV Welder, SN MA210072A.

MILLERMATIC 211 Wire Welder, SN MA022235N.

MILLER Dialarc 250/AC/DC Welder, SN KK317789.

HYPERTHERM Plasma Powermax 45, SN 45-077489.

### BRIDGE CRANES

ROBBINS & MYERS Bridge Crane, 10-ton cap., single girder, top running bridge, 5-ton under hung hoist w/pendant control, 45' bay.  
ROBBINS & MYERS Bridge Crane, 2-ton cap., single girder, top running bridge, 2-ton under hung hoist w/pendant control, 45' bay.

### CRANEWAYS & BUS

Over 250' of Crane Rails and Bus.

### ROLLING STOCK

Truck Work Body.

### AIR COMPRESSORS/DRYER

5 HP Air Compressor.

### MISCELLANEOUS

TROYKS Rotary Table, Mdl. R21, 21" table.

Powermatic Drill Press, VS, 12" x 14" table.

Powermatic VS Drill Press, 20" x 22" table.

STRANDS Geared Head Drill Press, 25" x 20" table.

Sterling Drill Sharpener.

KWIK Way Auto Cylinder Boring Machine (Bar), SN FN975.

Misc. Metals.

(1 of 20)  
Infrared  
Heaters to  
Be Sold



Tool Post Grinders.  
Index Heads.  
6" Machine Vises.  
Hoists.  
Slings.  
Pedestal Grinders.  
Anvil.  
QC.

Tool Boxes.  
Metal Tables  
and  
Sawhorses.  
Shop Support.  
Rigging  
Equipment.

Directions, Auction Terms & Conditions Available at [www.stoneauctioneers.com](http://www.stoneauctioneers.com)

**Public Auction – Live Onsite BidSpotter.com Live Online**